

# BASE VTT



Départ : Office du tourisme

## A voir ou à visiter

- **CHAOURCE** (église) :
  - La mise au tombeau.
  - L'orgue.
  - La crèche.
- **Chaource**
  - La fromagerie.
  - Le musée du fromage.
  - Le château de la Cordelière (golf).
- **Les Poteries** :
  - La ronde des feux (W- Pentecôte).



CHAOURCE

3

Circuit

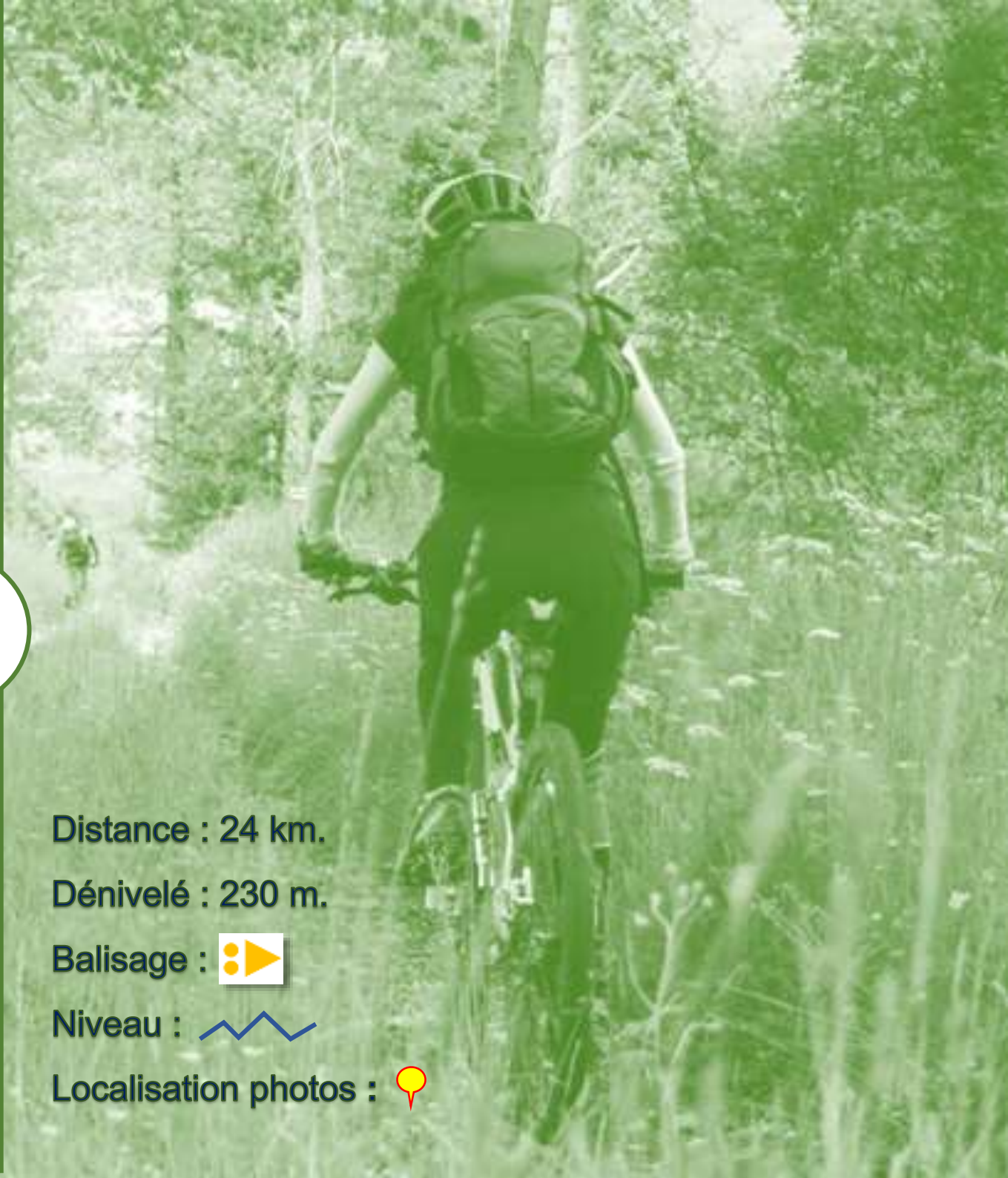
Distance : 24 km.

Dénivelé : 230 m.

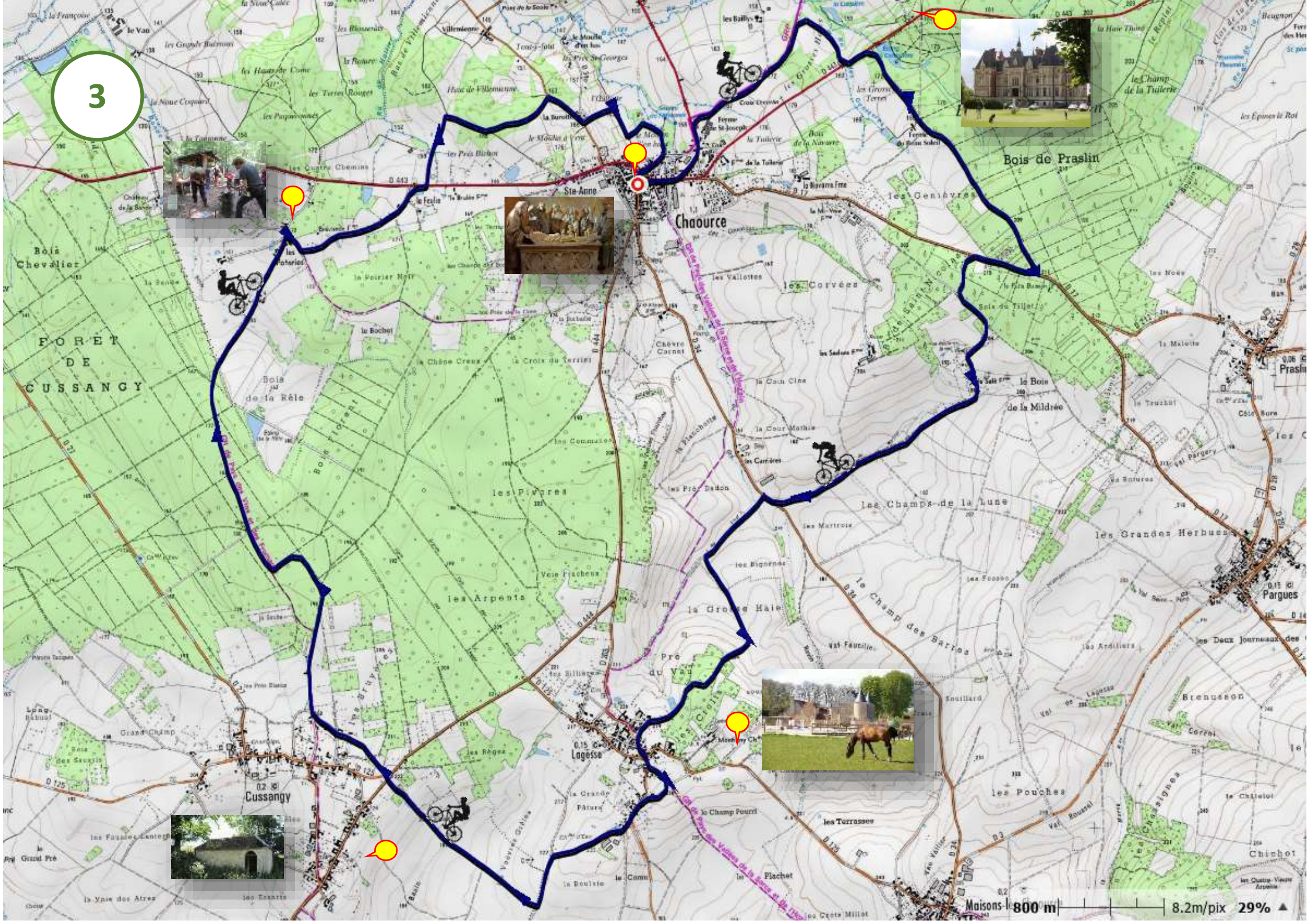
Balisage :

Niveau :

Localisation photos :






3



|  |   |   |                                    |   |  |
|--|---|---|------------------------------------|---|--|
| <p>2,020 km</p> <p>5 Petit sentier</p>     | <p>4,890 km</p> <p>10</p>                 | <p>8,400 km</p> <p>15 D34</p>           | <p>11,090 km</p> <p>20 GR</p>      | <p>11,930 km</p> <p>25</p>              | <p>14,950 km</p> <p>30</p>               |
| <p>1,570 km</p> <p>4</p>                   | <p>4,200 km</p> <p>9</p>                  | <p>6,720 km</p> <p>14 Le salé Ferme</p> | <p>10,950 km</p> <p>19 Lagesse</p> | <p>11,740 km</p> <p>24 D 202</p>        | <p>14,670 km</p> <p>29 D 444</p>         |
| <p>0,860 km</p> <p>3 Quitter la D 444</p>  | <p>2,130 km</p> <p>8 fil électrique</p>   | <p>6,070 km</p> <p>13</p>               | <p>10,640 km</p> <p>18</p>         | <p>11,530 km</p> <p>23 D 125</p>        | <p>13,030 km</p> <p>28 Point liaison</p> |
| <p>0,290 km</p> <p>2</p>                   | <p>3,43 km</p> <p>7 Ferme Beau Soleil</p> | <p>5,740 km</p> <p>12</p>               | <p>9,180 km</p> <p>17</p>          | <p>11,320 km</p> <p>22 suivre le Gr</p> | <p>12,620 km</p> <p>27</p>               |
| <p>0,000 km</p> <p>1 Départ O-Tourisme</p> | <p>10</p> <p>10</p>                       | <p>5,430 km</p> <p>11</p>               | <p>8,530 km</p> <p>16</p>          | <p>11,250 km</p> <p>21</p>              | <p>12,030 km</p> <p>26</p>               |

|                                      |   |  |                                 |                            |
|--------------------------------------|---|--|---------------------------------|----------------------------|
| <p>16,210 km</p> <p>35</p>           | <p>19,710 km</p> <p>39 Les Poteries</p> | <p>21,900 km</p> <p>44</p>               | <p>23,440 km</p> <p>50</p>      | <p>24,110km</p> <p>55</p>  |
| <p>16,210 km</p> <p>34 Suivre GR</p> | <p>18,600 km</p> <p>38 suivre le GR</p> | <p>21,600 km</p> <p>43</p>               | <p>23,240 km</p> <p>48</p>      | <p>24,110km</p> <p>54</p>  |
| <p>15,920 km</p> <p>33</p>           | <p>17,310 km</p> <p>38 suivre le GR</p> | <p>20,900 km</p> <p>42</p>               | <p>23,000 km</p> <p>47</p>      | <p>23,920 km</p> <p>53</p> |
| <p>15,500 km</p> <p>32</p>           | <p>17,000 km</p> <p>37</p>              | <p>20,640 km</p> <p>41 La Feulie</p>     | <p>22,740 km</p> <p>46</p>      | <p>23,880 km</p> <p>52</p> |
| <p>15,260 km</p> <p>31</p>           | <p>16,740 km</p> <p>36</p>              | <p>19,900 km</p> <p>40 Quitter le GR</p> | <p>22,420 km</p> <p>45 D 34</p> | <p>23,760 km</p> <p>51</p> |

**Légende:**





Routes:  Chemins/sentiers  GR 

Directions:   Mauvaises directions: 

**Les constructions humaines:**


 Églises/chapelles     Croix     Ponts     Maisons     Mairies     Chemins de fer

**Les indications:**

 Pique-nique     Parking     Camping     Points de vues

**L'eau:**

 Rus/rivières:     châteaux d'eau:     Lacs/étangs).

Végétation (bois/forêt): 

*Un rando-Guide se lit de bas en haut.*